

# A-LEVEL FINE ART

*COURSE BOOKLET FOR STUDENTS & PARENTS*



*West Coventry Sixth Form FINE ART*

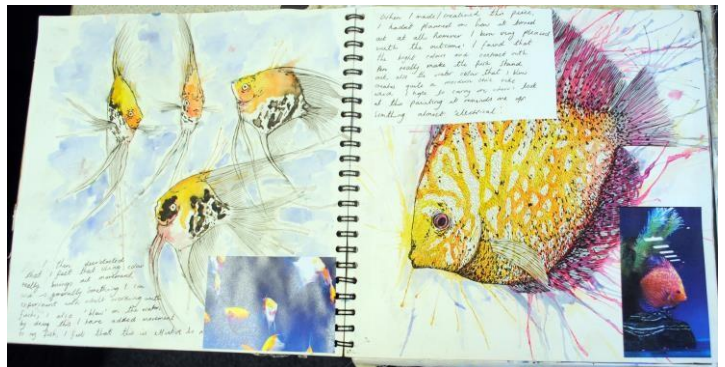
*Teaching Department*

Mrs S Greenshields, Miss Carter & Miss Smith  
teachers of Art

Mrs M Ansell, Mrs S Greenshields & Miss Carter  
teachers of Photography

## WHAT WILL I LEARN?

The course is extremely successful and demanding and requires you to work practically, creatively and passionately within the many aspects of Art and Design. You will develop a strong foundation of subject knowledge and develop your practical skills within a range of traditional and digital media and techniques. You will challenge and form opinions through conducting critiques independently and within group discussion, exploring the theoretical, historical and critical foundations of the subject. You will develop skills in observation, presentation and visual communication, all of which will be of use when you attend interviews for universities.



Each project should read like a visual journey from your starting point to conclusion. Along the way there should be a number of detours where an idea may have been partially developed then rejected. Each piece you produced should be numbered by you for ease of marking and so that it flows in chronological order. Where artists or designers have influenced you, or your work, this should be annotated in your sketchbook. Any advice, which is given whether you accept this or reject it, must be recorded in your annotations. Art is something that cannot be produced in isolation and the skill of accepting criticism or rejecting advice is a quality that the examiner will look for when allocating marks.

## WHAT ARE THE ENTRY QUALIFICATIONS?



Normal entry requirements are a grade 4 or above at GCSE in Art and Design.

## **Areas of study and Assessment**



*TERM ONE SEPTEMBER TO DECEMBER  
YEAR 12*

### **Workshops: OBSERVATION**

Students will embark on a series of mini projects taking part in art technique workshops and producing an individual project choosing a direction based on the theme given that year. The project will be marked using objectives from the exam board. AO1 Research and Investigation, AO2 Experimentation, AO3 Recording, Analysing and Developing, AO4 Personal response.

*FEBRUARY YEAR 12 TO JANUARY YEAR 13*

### **UNIT 1: PERSONAL PROJECT**

This is similar to the mini projects except that students will develop their projects based on their own strengths and interests. Students, along with guidance from their teachers, will choose a personal theme and starting point.

The project will be assessed against the same objectives as above. Ideas are developed through investigation, experimentation and can evolve into works produced in a variety of media, illustration, installation, textiles, Graphics, 3D, painting,

printing, mixed media and digital art.

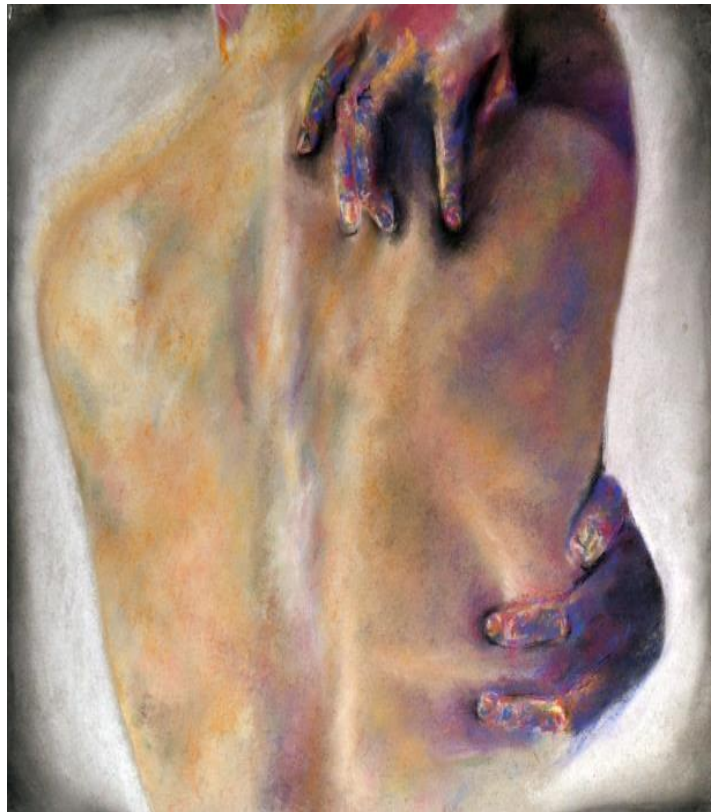
This project will be in-depth and will be submitted alongside an essay of 1000-3000 words.  
Weighting: 60 % of final A-Level mark

### **EXAM UNIT 2: Examination (15 hours)**

An externally set assignment. Paper received 1<sup>st</sup> February.

The candidate can choose one question and develop a personal, visual response to the question that they choose.

Weighting: 40 % of final A-Level mark



## *Summer Transition Task*

When you hear the word reflection, what images pop into your mind? Your reflection in a shiny surface, water reflecting its surroundings, a person in the mirror....

You will be asked to research and create a series of artwork in response to Reflection. You will present your summer work in your first A'level Art lesson as a power point.

### **Task 1**

Collect internet images relating to your interpretation of Reflection. You could search photos or drawings/paintings relating to the theme reflection, save them as a slide on powerpoint as a moodboard. Include a big bold title.

### **Task 2**

Complete a series of artwork responding to the theme Reflection. These should include your own photos & drawings, which can be done in black and white or colour, dry materials or wet, traditionally on paper or digitally on the ipad.

Photograph your work and present it on consecutive slides in your powerpoint presentation.

### **Task 3**

Evaluate your portfolio of work.

Be prepared to be asked questions from the group regarding your ideas, intentions and choices.

## *USEFUL WEBSITES*

Exam Board - [www.aqa.org.uk](http://www.aqa.org.uk)

Art 2 day – [www.art2day.co.uk](http://www.art2day.co.uk)

Art Student Guide – [www.artstudent.com](http://www.artstudent.com)

Key Research Directory - [www.axisweb.org](http://www.axisweb.org)

The Tate Galleries – [www.tate.org.uk](http://www.tate.org.uk)

Saatchi Online – [www.saatchionline.com](http://www.saatchionline.com) Warwick Arts Centre, Warwick –

[www.warwickartscentre.co.uk](http://www.warwickartscentre.co.uk) The Herbert Art Gallery, Coventry – [www.theherbert.org](http://www.theherbert.org)

The Ikon Gallery, Birmingham – [www.ikon-gallery.co.uk](http://www.ikon-gallery.co.uk)

## *FUTURE OPPORTUNITIES*

The Advanced GCE can lead to broad variety of Art and Design based courses.

If you take time to think, everything we have contact with has been designed by someone with an Art and Design background. This course will give you the opportunity to have a broad range of transferable skills including problem solving, presentational and communicative skills.

~