

WEST COVENTRY ACADEMY SIXTH FORM



SUBJECT TRANSITION BOOK
Summer 202

PSYCHOLOGY

STUDENT NAME:

SCHOOL:

This booklet has been prepared by the Psychology department for you to read and the work contained in it will ensure that you get off to the best possible start in this subject area. It is very important that you read this booklet carefully over the summer and have a thorough attempt to complete the work and submit it at the start of the year to your subject teacher in the very first lesson. This will be the first impression you create, therefore a real indicator of how serious you are prepared to be in your studies.

A-Level Psychology

This subject is taught at:

West Coventry Academy

Key members of staff:

Mrs Kelly Withers – West Coventry Academy - Staffklw@westcoventryacademy.org

Course Details

Course Title: A-level Psychology

Exam board: AQA

Exam Board web site: www.aqa.org.uk

Assessment method: Psychology is assessed by 6 main topics (Paper 1 and Paper 2) during year 12 followed by 3 examination papers in year 13.

Minimum requirement: If you have taken GCSE psychology you should have achieved at least a grade C. If not, at least a B grade in English, Mathematics or Science is necessary.

About the course

Psychology is a very popular academic course that is firmly grounded in the scientific study of behaviour and mental processes. Psychology is the study of both our mind and behaviour. Psychologists set out to describe, explain, predict, change and even control to some extent behaviour. Studying A Level Psychology will help you to gain the essential knowledge and understanding of our mind and behaviour in the real world.

The modules we cover in year 12 are:

Introductory topics in Psychology – Paper 1.

- Social Influence
- Attachment
- Memory

Psychology in context - Paper 2.

- Biopsychology
- Approaches (integrated throughout the course)
- Psychopathology
- Research Methods

Paper 1 and paper 2 will be assessed through two 1 hour 30 minutes examinations at the end of year 12.

Paper 1 – Introductory topics in Psychology - 50% of year 12

Paper 2 – Psychology in Context - 50% of year 12

The modules we cover for A Level Psychology are:

- Introductory topics in Psychology (as above)
- Psychology in context (as above)
- Issues and debates
- Research Methods (further developing year 12 material)
- Relationships, Schizophrenia and Forensic Psychology

A Level Psychology will consist of three 2 hours examinations

Paper 1, 2 and 3 – 33.3% of A Level

Academic and Career Pathways

Psychology provides you with the skills required to study at a higher level whilst also developing the background knowledge that will be useful in the work place. This course lays an appropriate foundation for further study of psychology and related subjects in higher education. The valuable knowledge and transferable skills will be useful for pursuing careers in the following fields:

- | | |
|--------------------------------|------------------------------------|
| ❖ Psychiatry and Mental Health | ❖ Police |
| ❖ Criminology | ❖ Criminal Justice System i.e. Law |
| ❖ Teaching/ Lecturing | ❖ Counselling |
| ❖ Health | ❖ Education |
| ❖ Occupational Psychology | ❖ Advertising |

What equipment will be needed for the subject?

- ❖ An A4 ring binder
- ❖ Dividers
- ❖ Lined paper
- ❖ Pens, pencils ruler
- ❖ Organisation will be key for success in your A-Levels!

Please complete the following activities over the summer ready to hand in on the very first lesson in this subject:

Activity 1: Obedience – Research task

Carry out research to investigate any relationship between how obedient someone is and how strict their parents/carers are. **Bring the completed research task to your first lesson.**

You will need to ask each person to rate how obedient they feel they are (on a scale of 1-10, 1 being not very and 10 being very) and how strict their parents/carers are (on the same scale of 1-10).

These are quite personal questions, so each participant will have a number instead of recording their name (see the results table). You will need to gain informed consent. Write what you will say to the participant to get their consent on the lines below

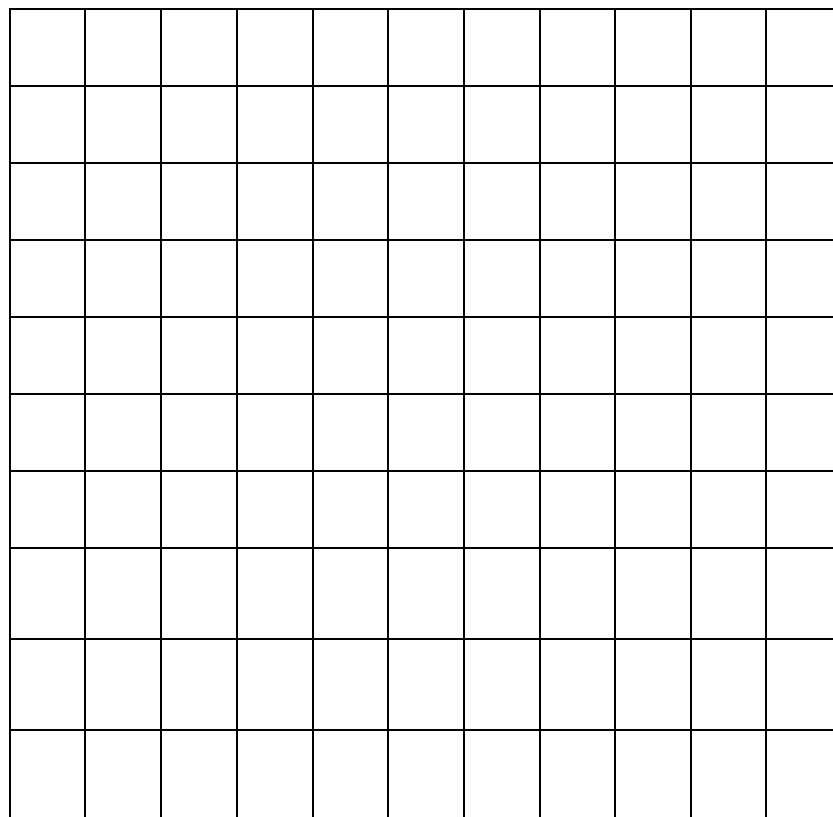
You will need to ask each participant exactly the same questions. Write your questions on the lines below (remember to tell them what the numbers on the scale mean)

Results table: Record the results in the table below. For each participant record which number they give you as a rating of their obedience and their parents/carers strictness.

Participant Number	Obedience rating	Strictness rating
1		
2		
3		
4		
5		
6		
7		
8		

Plotting your results:

Using the graph paper below, plot the results on a scattergraph. For example, if Participant 1 gave a obedience rating of 7 and a strictness rating of 9, you would need to go along the x axis (obedience rating) to 7 and then up the y axis (strictness rating) to 9 and plot a point there.



What kind of correlation have you got? _____

What conclusions can you draw from your graph? What do the points show?

Can you evaluate your research in any way?

Activity 2: Conformity

- What is conformity?

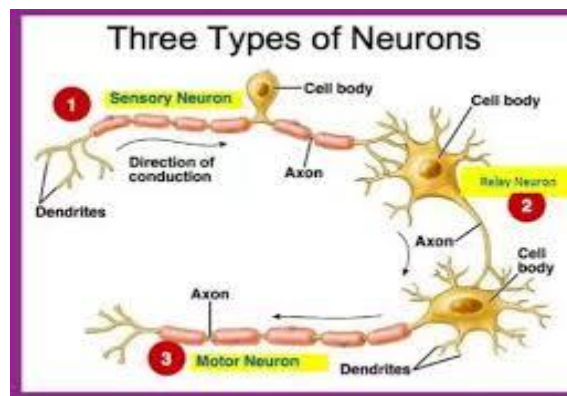
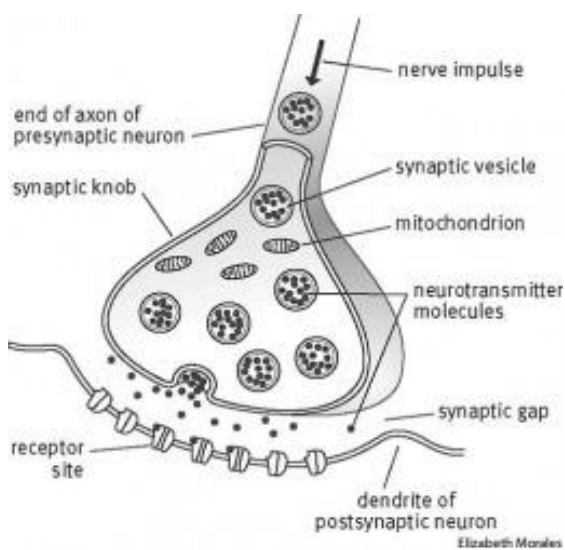
- Why do people conform? Give a psychology based example.

- What are the three main type of conformity:
 - 1.
 - 2.
 - 3.

Activity 3: Approaches in Psychology

1. Using the internet research and outline the following approaches used in psychology:

- ❖ **The Behavioral approach** – both classical and operant conditioning
- ❖ **Social Learning Theory** – observation/imitation/role models/vicarious reinforcement/mediational processes (4 mediational processes)
- ❖ **The Biological approach** – genotype/phenotype/role of the central and peripheral nervous system/role of the thyroid and pituitary gland/fight and flight/label sensory, relay and motor neurons/explain a chemical transmission



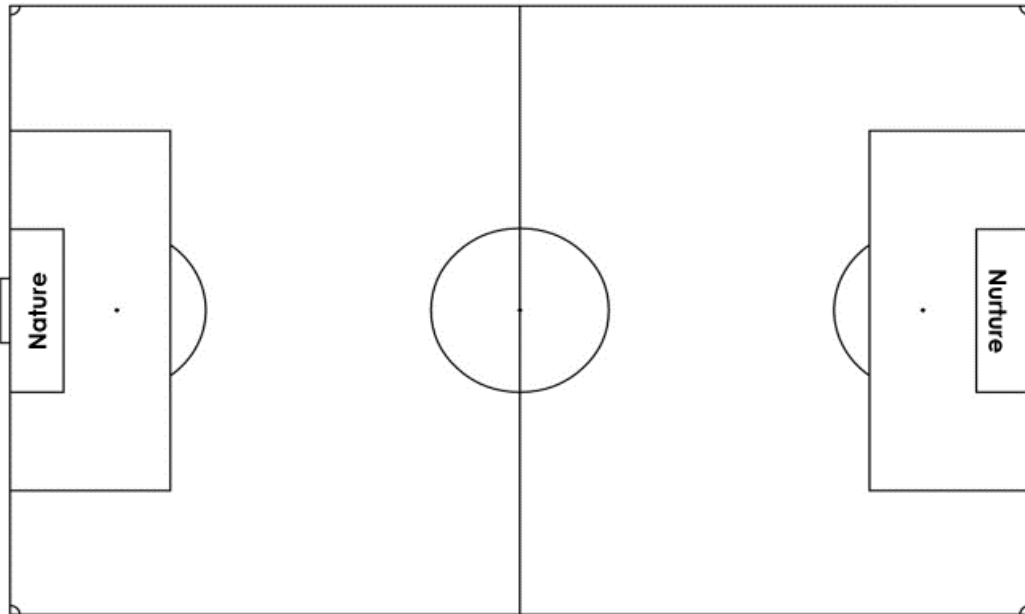
- ❖ **The Cognitive approach** – information processing/computer based models/schemas/emergence of cognitive neuroscience

2. For each approach research a well known study to enhance knowledge and understanding. E.g. The behavioural approach = **Pavlov's dogs and Skinner's box**, The Social learning approach = **Bandura and Bashing Bobo**, The Biological approach = **Phineas Gage**, The Cognitive approach = No main study!!
3. Find 2 strengths and 2 weaknesses for each of the approaches used in psychology.

Now:

- ❖ Define Nature and Nurture
- ❖ Place the 4 Approaches onto the Nature vs Nurture football pitch.
- ❖ Explain reasons for where you have placed the approaches.

The Nature versus Nurture Game



Activity 4: Ethical guidelines/issues

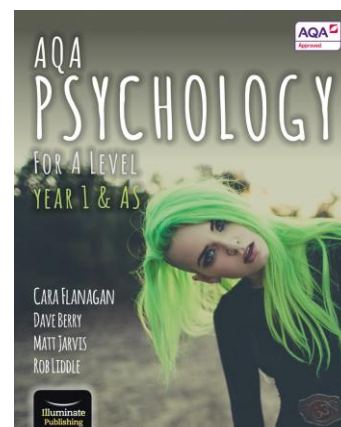
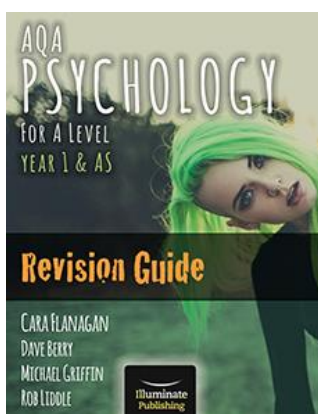
- ❖ What is meant by the term 'ethical guidelines'?
- ❖ Why do we need ethical guidelines in psychology?
- ❖ Research the main ethical issues in psychology (always think DRIP)
- ❖ Focusing on Asch's line study link the ethical issues to his study (**D**eception, **R**ight to withdraw, **I**nformed consent and **P**rotection of participants (**DRIP**))
- ❖ Research one other famous/well known study in psychology and link in the ethical issues

Recommended textbooks.

AS textbooks:

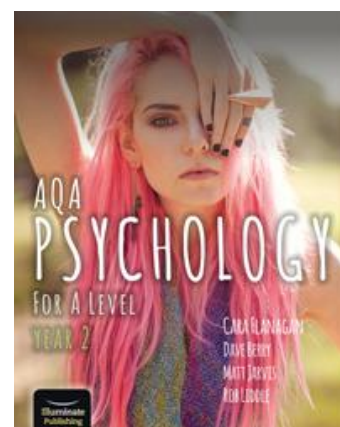
AQA Psychology for A-Level Year 1 & AS – Illuminate Publishing – Flanagan, Berry, Jarvis and Liddle.

Revision guide also available.



A2 textbooks:

AQA Psychology for A-Level Year 2 & A2 – Illuminate Publishing – Flanagan, Berry, Jarvis and Liddle.



Other good sources to read:

Revision guides such as the CGP Psychology for AQA – AS & A Level Revision Guides available

Useful websites

www.tutor2u.net – **Tutor2u** is an essential Psychology resource for all students. It contains an excellent Blog with relevant news stories, exam advice and analysis of topical events. It also has various quizzes, revision notes and Power Points for free.

www.s-cool.co.uk/a-level/psychology

www.loopa.co.uk

www.thestudentroom.co.uk

www.examtutor.com/psychology

www.aqa.org.uk - **AQA** exam board for A-level Psychology containing full resources, specification, past papers and answers and exemplar student material.